



HP Connectivity Kit

Controlling the Classroom

Agenda

Layout

Monitoring

Data sharing

Messaging

Exam mode

Assessment

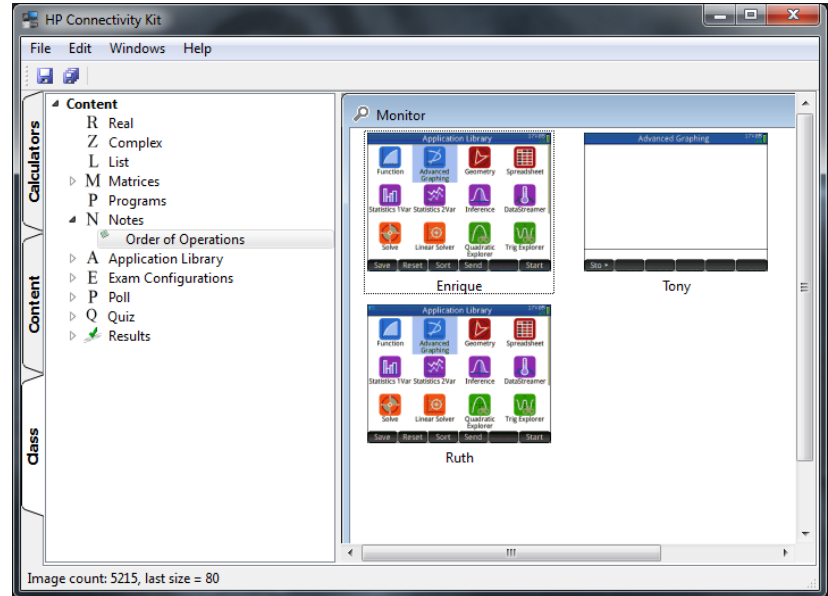


Layout

Calculators tab to view currently connected HP Prime calculators

Content tab for creating sending content

Class tab to monitor, control and assess

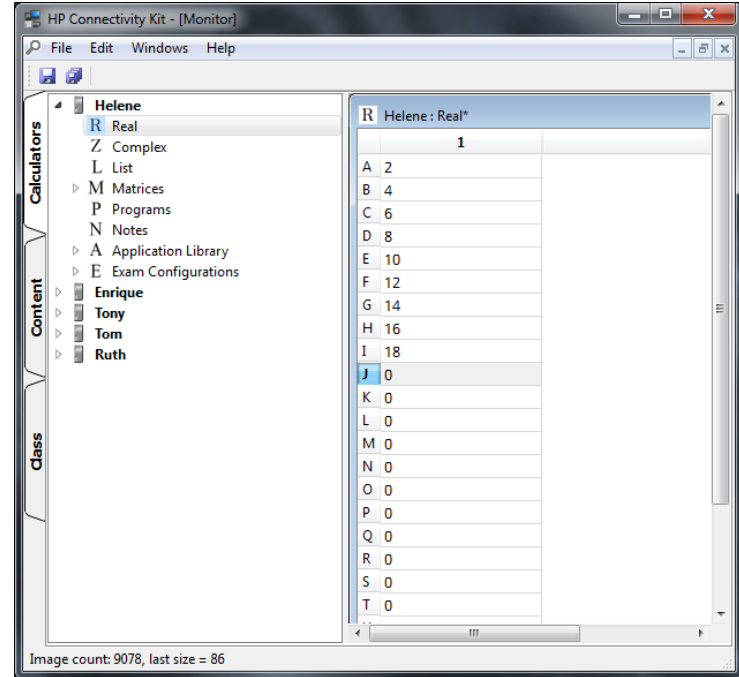


Calculators tab

Administer devices

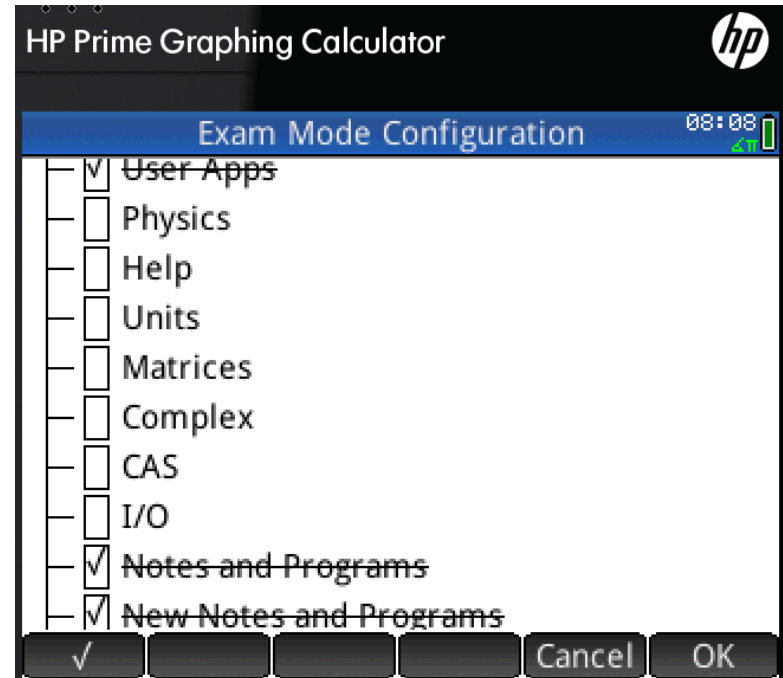
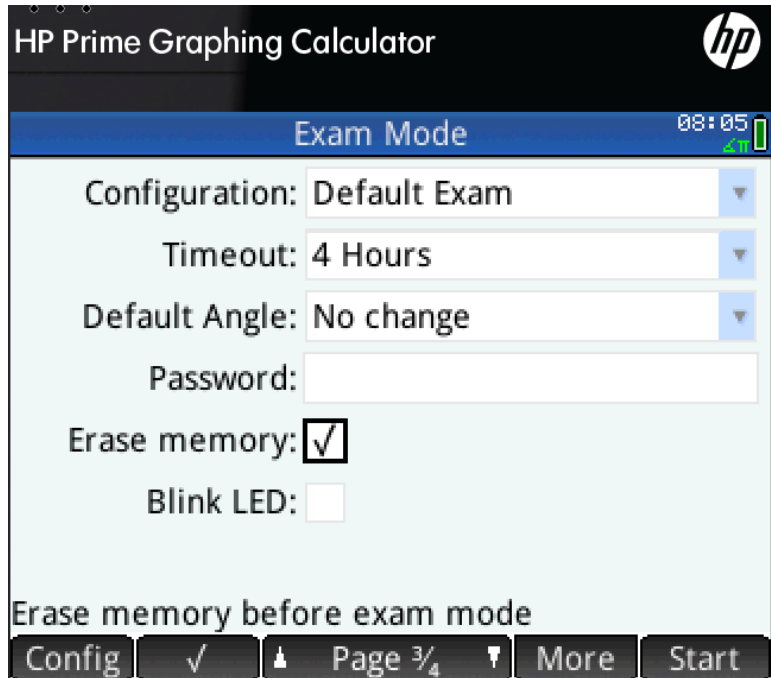
On each individual calculator copy, add,
and modify:

- Data sets
- Programs
- Notes
- Applications
- Exam modes



Clearing Prime for exam usage

Teachers or proctors can easily ensure removal of user created content for any test or exam

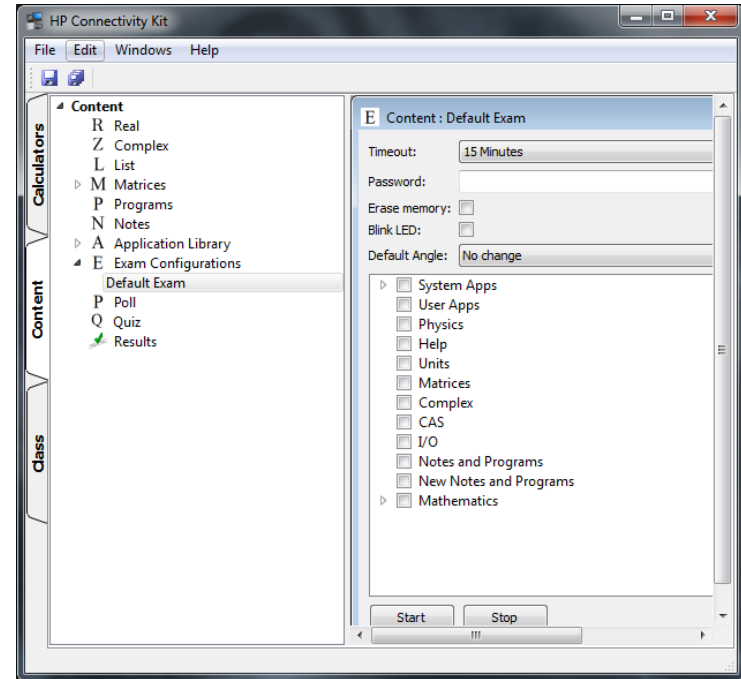


Content tab

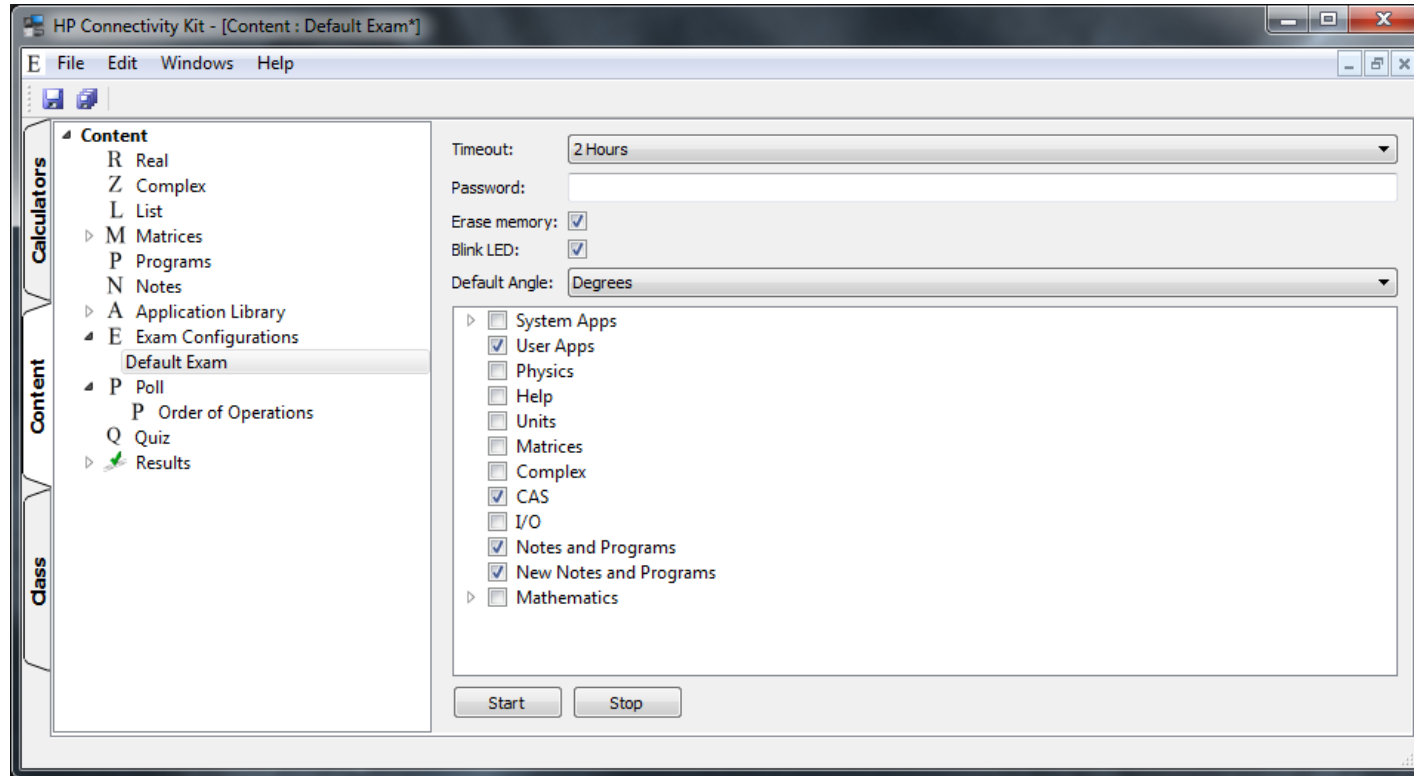
Creating content

Centrally copy, add, and modify:

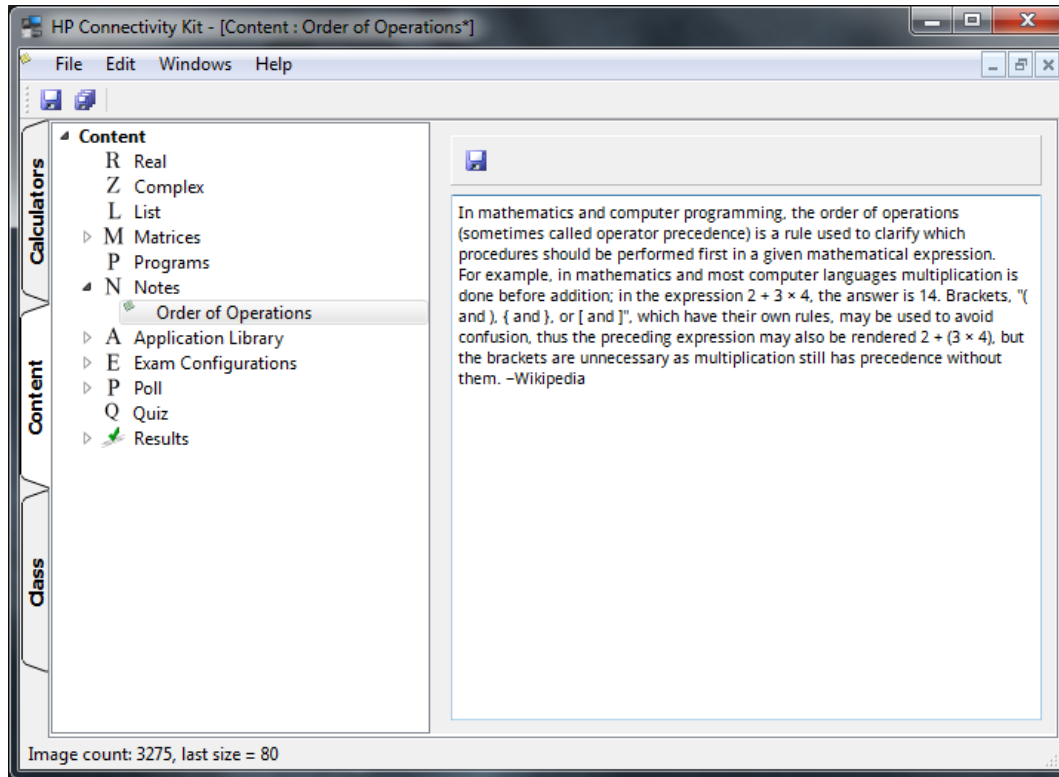
- **Data sets**
- **Programs**
- **Notes**
- **Applications**
- **Exam modes**



Exam Mode Creation



Content Creation



Class tab

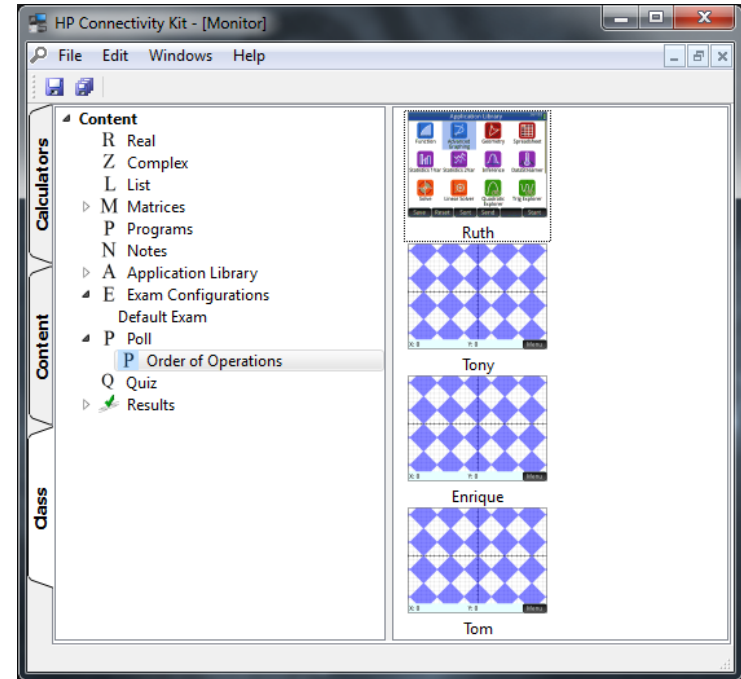
Monitor, control and assess

Monitor class

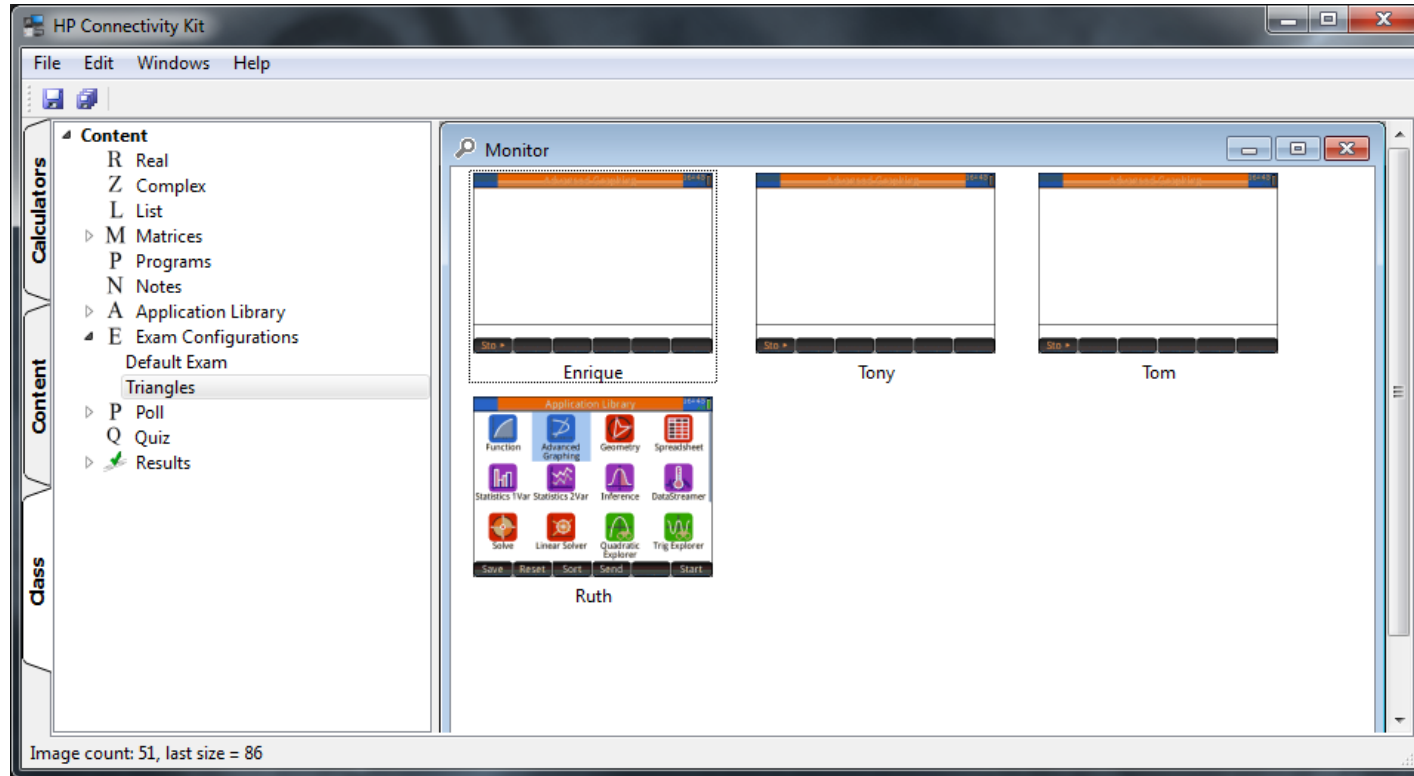
Model good student behavior

Assess with polls and quizzes

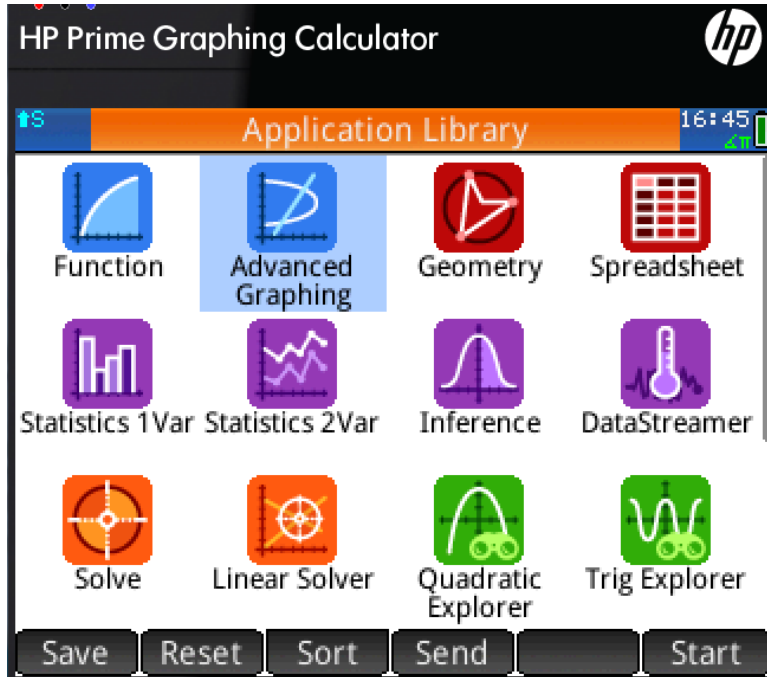
Control functionality with exam mode



Exam Mode Usage



Classroom Monitoring



FAQ

Frequently Asked Questions

Q: Can exam mode be disabled with another calculator?

A: No, unlike other calculators, HP Prime exam mode cannot be disabled using another calculator

Q: Why are there 3 LEDs?

A: Having only one blinking LED does not provide assurance that the calculator is in the correct exam configuration

Q: Can students replicate the light pattern of an exam mode?

A: No, because the pattern of the three lights is cryptographically generated, it cannot be replicated

Q: Can exam mode be disabled by students?

A: Students cannot exit exam mode without the password for the exam; if no password is chosen, a PC is required to disable it or time must expire

Q: What is the range of duration for exams?

A: Exams can be set from 15 minutes to 8 hours in length

Q: What happens if the battery is removed?

A: Exam mode is unaffected

Q: Can exam mode be saved on student calculators for recurring exams?

A: Yes, configurations can be created by/shared with students and can be transferred between calculators



Thank you

